

## Head of State honours State Orchestra with presence



CHAIRMAN of the State Administration Council Prime Minister Senior General Min Aung Hlaing and wife Daw Kyu Kyu Hla together with State dignitaries enjoyed excellent entertainments of the State Orchestra of the MRTV under the Ministry of Information at the theatre of the Myawady media centre in Yankin Township yesterday afternoon.

The master of ceremonies presented a brief report about functions of international orchestras and the State Orchestra. Next, an animation video clip on the State Orchestra and musical instruments was screened.

When the State Orchestra played the

national anthem, the Senior General and attendees saluted it.

The State Orchestra played the ASEAN Anthem and MNSO overture of the orchestra and other musical entertainments.

The Senior General, wife and dignitaries watched song and musical entertainments of vocalists from MRTV, film and musical arenas. The Senior General and wife presented bouquets and cash awards to the State Orchestra and vocalists.

The Senior General and wife joined a tea party together with State dignitaries and artistes.

**SEE PAGE-3**

### CURRENT AFFAIRS PAGE-5



Thukhawady public rental housing in Nay Pyi Taw to lease 448 apartments to the people

### LOCAL BUSINESS PAGE-6



Old Moehtaung chilli pepper sold at losses upon new season approaching

### ARTICLE PAGE-7



Landslides Along Myawady-Kawkareik Asian Highway Disrupt Commodity Market

By GNLM Correspondent Team



A garment factory operates manufacturing of CMP products in Myanmar in May 2023.

## Myanmar earns over \$1.04 bln from CMP garment exports in Q1 of this financial year

According to the statement of the Central Statistical Organization under the Ministry of Planning and Finance, the export value of the cut-make-pack (CMP) garments reached over US\$1.04 billion in the first three months of this financial year.

In the 2022-2023 financial year, Myanmar pocketed \$1,363.9 million from CMP exports in Q1, \$1,841.1 million in Q2, \$1,136.4 million in Q3, and \$1,047.4 million in Q4, accumulating to \$5.3888 billion.

There are up to 505 foreign-invested garment factories and workshops in Myanmar that run under the CMP sys-

tem, and the largest investment comes from China. Chinese Taipei, Thailand, South Korea, and Japan have also invested in that sector, according to the statistics.

The Ministry of Labour stated that CMP system enterprises, which stand at the top of the export possibilities in Myanmar, currently operate with more than 700 factories.

According to the Myanmar Garment Manufacturers Association, the garment industry is being carried out through the CMP system in Myanmar, and they are mainly receiving orders

from Japan, China, S Korea, and EU countries.

Among the domestic enterprises, CMP enterprises are involved in a wide range of investment sector, and from these enterprises, many employment opportunities for labourers are being created in the country.

A total of 602 CMP factories are being operated in Yangon Region, 71 in Bago Region, nine in Mandalay Region, one in Sagaing Region, 18 in Ayeyawady Region, three in Magway Region, two in Kayin State and three in Nay Pyi Taw. — TWA/CT

# NATIONAL

## PHOTO NEWS

### Help being provided to flood-affected persons in time



PHOTOS : THET PHYO KYAING (IPRD)

ON 12 August 2023, Chief Minister of Bago Region government U Myo Swe Win on his trips to flood-affected areas in Bago provides foods and drinking water, and supplies aids to the flood-affected people and he also offers support to travellers and drivers who are facing difficulties due to flooding road in Bago, Bago Region.



### Myanmar children in UK, Sweden, Denmark and Ireland have chance to pursue Myanmar curriculum in 2023-24 AY



MYANMAR school-age children living in the United Kingdom, Sweden, Denmark and Ireland for various reasons will have the chance to learn basic education in Myanmar curriculum from kindergarten to Grade-10 in 2023-2024 academic year, according to an announcement issued by Myanmar Embassy in London on 11 August.

By not later than 23 August, applicants must submit their applications to the Myanmar

Embassy to the UK along with copies of their valid passports and those of their parents, as well as the Biometric Residence Permit (BRP). If the applicant is attending a school, he or she must submit Confirmation of Acceptance for Studies (CAS) and the similar document by the company if he or she is employed, the announcement said.

The students intending to enroll for KG must be already five years old by 31 May 2023

and those who want to enroll for other grades must submit their certificates of completion or a verification letter from a school they had enrolled before, it said.

The announcement also said that admitted students must sit for first term and final exams and the results will be issued for those who pass both exams. More information can be requested at [admin@londonmyanmarembassy.com](mailto:admin@londonmyanmarembassy.com). — ASH/TH

### Flood Bulletin

(ISSUED at 14:00 hrs MST on 13-8-2023)

#### Flood Condition of Sittoung River

ACCORDING to the 13:30 hrs MST observation today, the water level of Sittoung River at Madauk has exceeded by about more than one foot above its danger level. It may fall the present water level by about (½) foot during the next one day and may remain above its danger level.

#### Flood Condition of Bago River

ACCORDING to the 13:30 hrs MST observation today, the water level of Bago River at Bago has exceeded by about ½ foot above its danger level. It may fall below its danger level during the next one day.

#### Flood Condition of Thanlwin River

ACCORDING to the 13:30 hrs MST observation today, the water level of Thanlwin River at Hpa-an has exceeded by about three feet above its danger level. It may fall the present water level by about 1½ feet during the next one day and may remain above its danger level.

#### Flood Condition of Chindwin River

ACCORDING to the 13:30 hrs MST observation today, the water level of Chindwin River at Homalin has exceeded by about one inch above its danger level. It may continue to rise the present water level by about one foot during the next one day and may remain above its danger level.

#### Advisory

IT is especially advised to the people who settle near the river banks and low lying areas in Madauk, and Hpa-an and Homalin townships, to take precaution measure.

## Head of State honours State Orchestra with presence



Chairman of the State Administration Council Prime Minister Senior General Min Aung Hlaing and attendees salute the National Flag while the State Orchestra plays the national anthem.

### FROM PAGE-1

The State Orchestra of MRTV is equipped with musical instruments and the troupe

is formed with 48 musicians and one conductor plus six vocalists from the modern band of the department, totalling

55. Those from the orchestra take practices to present entertainments at the State level ceremonies, receptions in

honour of foreign guests and national-level music concerts. Yesterday, it performed an introductory entertainments

as the chamber orchestra.—  
MNA/TTA

The 8<sup>th</sup> ASEAN Ministerial Meeting on Drug Matters (AMMD) was held in Vientiane, Laos, on 10 and 11 August, and six members of the delegation led by State Administration Council Member Union Minister for Home Affairs Chairman of the Central Committee for Drug Abuse Control Lt-Gen Yar Pyae participated in the meeting. The delegation left Vientiane Airport in Laos for Yangon at the local standard time of 1:30 pm on 12 August 2023, and arrived back in Yangon in the evening.

Senior military officers and officials from the Ministry of Home Affairs welcomed back the Myanmar delegation at Yangon International Airport.

Representatives from ASEAN member countries and the ASEAN Secretariat attended the meeting, and Deputy Prime Minister and Minister of Public Security of Lao PDR Pol Gen Vilay Lakhmfonng launched the meeting with his greetings.

Next, the representative leaders of ASEAN member countries gave an opening speeches, and the head of the Myanmar delegation Union Minister Lt-Gen Yar Pyae pointed out that man-made drug (Synthetic Drug) transactions in most countries in the world are the main threat, supporting related crimes such as money laundering, arms

smuggling, and violence. Thus, it continues to be a threat to regional stability and peace, he added.

Myanmar defies drug eradication combat activities as a national duty and has been performing special anti-narcotics operations in cooperation with the Myanmar Police Force and the Department of Customs, arresting and taking action on drug transactions, and confiscating loads of chemicals used in making drugs.

In addition, Myanmar is also working closely with international organizations, regional countries, and neighbouring

countries, including the United Nations, to carry out anti-narcotics activities. The cooperation of all countries is very important in solving drug problems, and it is necessary to exchange information and increase cooperation without political entanglements between ASEAN member countries, he continued.

After that, he expressed his expectation from the meeting that great experiences and plans for future cooperation among ASEAN member countries would be able to be discussed in a friendly manner. The meeting discussed the ASEAN Joint Decla-

ration to be announced at the 67<sup>th</sup> United Nations Commission on Narcotic Drugs (CND) meeting, ASEAN's recent drug situation, the 44<sup>th</sup> ASEAN Senior Officials Meeting on Drugs and Related Meetings' report and follow-up matters, and issues related to the review of the ASEAN Work Plan on Securing Communities against Illicit Drugs 2016-2025 and future cooperation in drug control activities.

The Myanmar delegation met a delegation led by Deputy Prime Minister and Minister of Public Security of Lao PDR Pol Gen Vilay Lakhmfonng, and

openly exchanged their views on promotion of cooperation and holding meetings between the two countries and the ministries of Home Affairs, border region control of the two countries, enhancing cooperation in eradicating illicit drugs, human trafficking, arms smuggling, and online fraud crime, re-opening the Myanmar-Laos border liaison offices and friendship bridges as soon as possible, and carrying out matters that will benefit both countries.

In the evening, they attended a dinner hosted by Pol Gen Vilay Lakhmfonng. — MNA/CT



State Administration Council Member Union Minister for Home Affairs Lt-Gen Yar Pyae participates in the 8<sup>th</sup> ASEAN Ministerial Meeting on Drug Matters (AMMD).

## 8<sup>th</sup> ASEAN Ministerial Meeting on Drug Matters takes place

# NATIONAL

## A team of specialists gives treatments to children under five in Magway



A child is vaccinated by a health worker during the medical visit of specialist team from Ministry of Health at Magway General Hospital.

A specialist team from Mandalay and Nay Pyi Taw General Hospitals in collaboration with medics from Magway General Hospital performed medical treatments for residents in Magway township, Magway Region on 12 and 13 August.

During their two-day vis-

it, the medical team provided treatments to 75 patients with heart diseases, 34 gastroenteritis patients, 76 neurologic patients, seven neurosurgical patients, 63 diabetes and hormonal patients, 12 patients with hematologic disorders, 22 patients with liver disease,

133 patients with physiological conditions, and 96 orthopaedic patients, totalling 518.

They provided healthcare services to the patients and transferred a patient with heart disease to Mandalay General Hospital and another patient who need to undergo

neurosurgical treatment to Nay Pyi Taw General Hospital.

Dr Ni Ni Hlaing, Professor of Diabetes and Hormonal Conditions, talked about diabetes to local people.

On 12 August, 80 children under the age of five who did not receive any vaccination were vaccinated with bOPV, IPV, MR, and Penta and 33 more children on 13 August at Magway General Hospital

and 44 another children also received similar vaccinations at the hospital in Minbu Township.

Similar programmes have already been conducted in Cyclone Mocha-hit Rakhine State, and Ayeyawady Region as well as Shan State and this initiative will continue to be implemented in other regions and states in the future. — MNA/TH



A gastroenterologist pays treatment to a patient from Magway Township during field trip of specialist team from Ministry of Health.

## National University of Arts and Culture (Yangon) invites applications for 2023-24 AY



Students learning music course at National University of Arts and Culture (Yangon).

IN the academic year 2023-2024, candidates can submit applications to the National University of Arts and Culture (Yangon) to attend first-year courses on music, theatrical, painting, sculpture, film, drama and other specialized subjects, along with the first-year course for cultural heritage management by 17 October.

Applications are available for purchase at the National University of Arts and Culture (Yangon) in Ward 26 of Dagon Myothit (South) Township, starting from 24 July.

Applicants must comprise the pho-

to copy of citizen scrutiny card, endorsement for successful result in matriculation examination, original copy of mark list, and seven passport-sized photographs.

Participants must have passed the matriculation examination in any combinations and must be healthy and fit with hobby in fine arts.

The university conducts four-year courses such as music, theatrical, painting, sculpture, film, drama and cultural heritage management courses and confers degrees on graduates.

— TWA/KZW

### Advertise

with us / Hot Line :



09974424848

Global NEW LIGHT of MYANMAR

www.gnlm.com.mm



#### CIRCULATION & DISTRIBUTION

(+95) (01) 8604532,  
Hotline - 09 454237515

#### ADVERTISING & MARKETING

(+95) (01) 8604530,  
Hotline - 09 251022355  
marketing@gnlm.com.mm  
subscription@gnlm.com.mm

Printed and published at the Global New Light of Myanmar Printing Factory at No.150, Nga Htat Kyee Pagoda Road, Bahan Township, Yangon, by the Global New Light of Myanmar Daily under Printing Permit No. 00510 and Publishing Permit No. 00629.  
[gnlmnews@gmail.com](mailto:gnlmnews@gmail.com)  
[newsroom@gnlm.com.mm](mailto:newsroom@gnlm.com.mm)  
[www.gnlm.com.mm](http://www.gnlm.com.mm)

#### Write for us

We appreciate your feedback and contributions. If you have any comments or would like to submit editorials, analyses or reports please email [aungthuya@gnlm.com.mm](mailto:aungthuya@gnlm.com.mm) with your name and title.

Due to limitation of space we are only able to publish "Letter to the Editor" that do not exceed 500 words. Should you submit a text longer than 500 words please be aware that your letter will be edited.

## NEWS IN BRIEF

### Reserved rice allocation for disaster affected regions

ACCORDING to the National Reserved Rice Procurement Supervisory Committee, a plan is in place to supply 500,000 bags of reserved rice to the regions impacted by natural disasters. To facilitate this assistance, the National Reserved Rice Procurement Supervisory Committee and the Myanmar Rice Federation have collaborated to acquire and gather 500,000 bags of reserved rice.

### Alternate routes considered to send Myanmar workers to Thailand amidst Asian Highway damage

OVER the past few days, work permits for MoU workers travelling to Thailand have been temporarily suspended due to landslides and road damage along the Asian Highway, according to the oversea employment agencies.

### Despite improved net profit, FMI unable to distribute dividends to shareholders yet

AT the annual meeting, U Theim Wai, the Executive Chairman of FMI, stated that despite the rise in net profit, the company is currently unable to distribute dividends to shareholders. The net profit of First Myanmar Investment Company Limited (FMI), listed on the Yangon Stock Exchange (YSX), increased by 1,647.5 per cent in the financial year 2022-2023. However, he mentioned that the decision not to allocate dividends still poses challenges.

### Homes affected by floods in Kyauktaw, MraukU

ACCORDING to relevant officials, more than 100 houses in Kyauktaw and MraukU townships were damaged due to continuous rains in Rakhine State over the past few days. As a result of the flood, nearly 3,000 people are taking shelter in Nyaungchaung camp in Kyauktaw Township. It has been reported that preparations for addressing the damage have not yet been made.

### Approximately 10 people injured in Phakant landslide

A group of people in Phakant Township in Kachin State were injured due to a landslide in Mana jade mine at 3 pm on 13 August. Approximately 10 people were hurt. Initially, local reports stated that there might be fatalities.

### Shwe Byaing Phyu oil and natural gas company undergoes liquidation

In accordance with Section 152 (a) of the Myanmar Adoption Law and pursuant to Section 15 of the bylaw, Shwe Byaing Phyu Oil and Natural Gas Company Limited has been liquidated by the shareholders of their own accord, starting from 10 August. According to the announcement made by Advocate Daw Hayman Oo (LL.B), the statement also indicated that the company's credit and debit can be requested and settled no later than 9 September.

## 11 out of 19 domestic cement plants operate as usual

ALTHOUGH the annual domestic demand for cement is about 9.9 million tonnes, the cement production volume of the 11 currently operating factories can meet the demand, according to the Ministry of Industry.

Domestically, there are 19 cement plants operated through the public-private joint ventures, eight of which are undergoing mechanical improvements and currently 11 factories are manufacturing cement.

These plants produced 8,123,570 tonnes of cement in the financial year 2022-2023 and were able to meet domestic cement demand, according to the No 2 Heavy Industries Enterprise.

Some cement plants have been temporarily shut down due to operational changes and new equipment expansion.

It can be produced local-



Max Cement Plant under operation in Lewe Township, Nay Pyi Taw Council Area.

ly to meet the annual cement demand. Among 19 domestic cement plants, some plants are equipped with five machine lines capable of producing 5,000 tonnes of cement or more, nine machine lines capable of producing between 1,000 tonnes and 5,000 tonnes and 13 machine lines capable of producing less than 1,000 tonnes.

Among three State-owned

cement plants — No 31 Heavy Industry (Thayet) and No 32 Heavy Industry (Kyangin) — had to stop production due to high energy consumption, high production costs and difficulty in competing in the market.

According to the information, government-private partnerships will also be implemented for operating the aforesaid two plants. — TWA/KZL

## Thukhawady public rental housing in Nay Pyi Taw to lease 448 apartments to the people



The photo shows completion of buildings from Thukhawady public rental housing in Dekkhinathiri Township of Nay Pyi Taw Council Area.

AT the opening ceremony of the housing project on 12 August, the Union Minister for Construction unveiled that as the Thukhawady public rental housing project in Nay Pyi Taw has been successfully completed, a total of 448 apartments within the hous-

ing complex will be leased to the people.

Reportedly, a total of 448 apartments from 28 buildings of the project will be rented to residents. Meanwhile, ongoing process is being made to implement Thukha Dagon Public Rent-

al Housing project in Yangon, which is set to offer 3,104 apartments.

To enhance the convenience of residents at Thukhawady public rental housing, each unit consists of a living room, two bedrooms, a kitchen, and a bathroom/toilet. Each building features four apartments on five floors.

The Ministry of Construction is implementing public rental housing projects for accommodating retired employees, company staff and low-income people.

The Mingala Yankin public rental housing in Mandalay was inaugurated on 30 June with accommodating people at 1,456 apartments. In implementing the national-level housing projects in Nay Pyi Taw, Mandalay and Yangon, these apartments provide people the opportunity to rent and reside at these apartments at cheaper rental charge than the current real estates. — TWA/KZL

# LOCAL BUSINESS

## Myanmar, Viet Nam aim to increase collaborations in trade and investment sectors



The discussions on trade and investment promotion between Myanmar and Viet Nam in progress in Viet Nam recently.

THE Myanmar Embassy to Viet Nam issued a press release, stating that a plan is underway to promote collaboration between Myanmar and Viet Nam across various sectors in order to increase trade and investment.

The embassy has announced that recent discussion was held between the Myanmar

Embassy led by Myanmar Ambassador to Viet Nam U Kyaw Soe Win and Viet Nam-Myanmar Friendship Association led by Chairman of the association Mr Chu Cong Phung including Vietnamese businesspersons. They primarily focused on increase of trade and investment between the two countries.

During the meeting, the chairman of the association and Vietnamese businesspersons expressed concerns regarding to increase investment and trade in Myanmar. They also discussed cooperation in trade sector between the two countries and current difficulties of Vietnamese companies. — ASH/KZL

## Myanmar's honey exports cross more than 900 MT during April-July

MYANMAR shipped 926.9 metric tonnes of honey to foreign trade partners in the past four months from April to July in the current financial year 2023-2024, according to the Apiculture Division under the Livestock Breeding and Veterinary Department.

Myanmar exported 100.41 MT of honey to foreign markets in April, 336.7 MT in May, 80.4 MT in June and 409.4 MT in July respectively.

Myanmar has delivered honey to the Republic of Korea, Japan, the US and Singapore. Myanmar's beekeeping businesses are mostly found in Sagaing Region, Mandalay Region, Magway Region and Shan State.

Myanmar produces sesame honey, jujube honey, niger honey, sunflower honey, lychee honey and flower honey.

Honey is utilized as traditional medicines in the country, while it also generates foreign income from exports.

There are some state-owned beekeeping stations with 6,200 beehives and about 820 private beekeeping businesses operating with nearly

200,000 beehives. Apiculture and honey production businesses are primarily found in Sagaing, Mandalay and Magway regions and Shan State.

Moreover, two million acres of crops yearly contribute to bee pollination every year. This year, 11 per cent of sunflower acreage is designated for pollen sources.

Additionally, beekeeping businesses near the crop fields contribute to the successful yield of the crop as well as quality honey.

Myanmar annually produces about 7,000 MT of hon-

ey, with a production capacity of 70 pounds per beehive. Approximately 2,600 MT of honey are conveyed to foreign markets every year. Myanmar's honey is priced at \$1,600 per tonne.

More than 1,900 MT of honey were shipped to external markets in the 2022-2023 FY, with an estimated value of over \$2.8 million.

Myanmar exported 1,853.74 MT to foreign markets by sea and 63.44 MT to neighbouring countries via cross-border. — NN/EM



Bee-keeper inspects beehives for honey production in Magway. PHOTO: ZAYYATU (MAGWAY)

## Old Moehtaung chilli pepper sold at losses upon new season approaching



Old Moehtaung chilli pepper seen in the market.

THE price of old Pyawbwe Moehtaung chilli peppers is priced at K14,500/K15,000 per viss recently in the Bayintnaung chilli market, a grocer told The Global New Light of Myanmar daily (GNLM).

The 2023 new Pyawbwe Moehtaung chilli is likely to enter the Bayintnaung market soon and the old 2022 Moehtaung chilli is sold at losses.

On 3 August, the new Moehtaung chilli peppers from Thedaw were priced at K15,000/K15,500 per viss at Bayintnaung market.

The 2022 Pyawbwe Moehtaung chilli pepper was kept in cold storage after buying at K16,000 per viss in August 2022.

The fee for cold storage was K75 per viss and it cost about K1,000 per viss including storage fees, transporta-

tion charges, withdrawal and labour charges.

When compared to the market price for cold storage and current resell prices, it shows a loss of K2,000 per viss and there will be a K40,000 loss per bag of 20 visses of Pyawbwe monsoon chilli.

The trader who keeps the products in cold storage possesses thousands of bags and they resell in the market recently. Therefore, they have only some hundreds of bags in hand, according to the Bayintnaung chilli market.

When new stocks of Pyawbwe Moehtaung chilli pepper enter the market, the Shan chilli pepper and Busoh bell peppers are also likely to enter the market in November, purchaser Ko Po Htaung told the GNLM. — TWA/KTZH

သတင်းစာ မှာယူလိုပါက ဆက်သွယ်နိုင်ပါတယ်  
09 454 237 515

သတင်းစာ ဂျပန်စာ စာစောင်များကို နှိုင်းဝင်ကားခံချိန်ခွဲ ပုံနှိပ်လိုပါက ဆက်သွယ်နိုင်ပါတယ်  
01 860 4530

# ARTICLE

“It is said the bailey bridge is being installed on the landslide-hit section. The construction work is scheduled to be completed within three to four days. If the road is fixed during these days, it will mitigate the damage of the freight caused by road destruction. The blocked road poses obstacles for drivers and incurs additional costs of food and accommodation”, Ko Aung Aung Oo, a truck driver, elaborated on road conditions.

The landslides were triggered by torrential rains on the Myawady road section on 7 August. Landslides near Tawnaw waterfall on Myawady-Kawkareik section on Asian Highway cuts a main channel for the Myanmar-Thailand border trade.

The current landslide is about 100 feet long and blocks transportation, forcing the trucks stranded on the roadside.

Consequently, the flow of imported goods through Thailand’s Mae Sot-Myawady border channel came to an abrupt stop, weighing on import prices.

The repair works are underway. The authorities ensure smooth freight flow by shifting to other checkpoints and modes of transport.



## Landslides Along Myawady-Kawkareik Asian Highway Disrupt Commodity Market

By GNLN Correspondent Team



The aerial photo shows the construction site where a temporary bailey bridge is being built at the landslide-hit section of Asian Highway.

### Myanmar-Thailand bilateral border trade

Myanmar’s border trade with the neighbouring country Thailand amounted to US\$2.127 billion in the past four months from April to July of the current financial year 2023-2024.

Myanmar conducts cross-border trade with Thailand via Tachilek, Myawady, Kawthoung, Myeik, Hteekhee and Mawtaung borders. Of them, the Hteekhee border performed the largest trade worth \$1.389 billion in the past four months.

The trade values stood at \$97.113 million at Myawady border post, \$12.986 million at Tachilek, \$7.189 million at Myeik, \$2.491 million at Kawthoung and \$0.088 million at Mawtaung.

The trade values stood at \$603.67 million at Myawady border post, \$63.295 million at Tachilek, \$34.715 million at Myeik, \$32.979 million at Kawthoung and \$3.937

million at Mawtaung.

### Current Myawady-Mae Sot highway condition

Another road option Htokawko-Nabu road section cannot be used due to earthen facilities. The road parts along Donekyi Mountain are unsafe with debris and water from the slopes of the mountain.

Some freight forwarders turn to old Dawna mountain hilly road. That road was constructed under the rule of the British and the scenic view on that road attracts tourists’ attractions. Upon the opening of the new Asian highway in late 2016, the Dawna mountain road was abandoned and after eight years, the commuters turned to that old road. However, that old road is unsafe for heavy trucks.

“Some move light cargo with the workers from one side to the other side as the road resumption period is still uncon-

firmed. If they shift to other roads, it will elevate freight shipping rates,” said Ma Wah Lwin, who sends consumer goods along Myawady-Hpa-an-Mawlamyine trips.

The road collapse on Asian Highway prompted small vehicles to move to other road parts which are not suitable for heavy vehicles. For road accessibility to the Myawady border market, a temporary bailey bridge is being constructed.

### Ease of operation procedures for smooth border trade

Following the landslides caused by torrential rain on the Myawady road section, the export and import of licensed goods can be shifted to other border posts, according to the notification released by the

border trade for the licensed goods.

“Ease of rules will facilitate freight flow for sure. However, the majority of our commodities are stored in Myawady. Therefore, it is hard to move to other border checkpoints as they are distributed through the commercial hub Yangon,” Saw Kabaw Htoo from Myawady Border Chamber of Commerce emphasized.

### Commodity market outlook

Landslides on the Myawady section on Asian Highway wreaked havoc on onion export to Thailand as trucks are stuck on the roadside. Road destruction on the Asian Highway resulted in price hikes for some imported goods in the Yangon market.

The authorities concerned also issued an order regarding a price hike warning for food sent by other areas to Myawady.

The prices of rice, eggs and some vegetables are inflated presently.

“The market relying on Thailand imports is battered a lot, bracing for price hikes. Yet some consumer goods can be substituted with some products. Those restaurants and consumers using Thailand’s edible oil are adversely affected. However, there are still other options for edible oil. Nonetheless, it still brings negative impacts on them,” Daw Moe Moe Wah, an owner of Wah Wah Win Depot in Bayintnaung Commodity Centre in Mayangon Township, Yangon, shared her opinion.

The stocks of edible oil imported by Thailand via the Myawady trade route are decreasing, leading to the price rise of edible oil. There is speculation that traders engaged in both Yangon and Myawady markets are likely to raise the prices of the goods conveyed to border markets until the Asian Highway resumes.

Translated/EM

## The road collapse on Asian Highway prompted small vehicles to move to other road parts which are not suitable for heavy vehicles.

Trade Department (Myawady Trade Zone). To ensure smooth trade, the exporters can move to some Myanmar-Thailand border posts after receiving export licences for the goods. If they want to change the mode of transportation to maritime transport, the authorities will give the green light to it as well. This move will also cover the importers engaged in Myanmar-Thailand

# OPINION

## Invest in education: A path to the progress of the nation

The pivotal role of education in the development of any nation cannot be overstated. Across the globe, developed countries boast a significant population of educated individuals, a testament to the pivotal role of the education sector in fostering such growth.

Both educators and learners within the education sector require robust support from both governmental bodies and private enterprises. This collaborative effort is crucial for producing capable students who eventually evolve into well-rounded, knowledgeable individuals. The presence of a skilled workforce is an essential precursor for a nation's advancement.

The crux of this support lies in the creation of ample learning opportunities for young minds. These opportunities encompass formal education within schools as well as broader exposure to societal knowledge. Herein, the onus rests on both the government and private entities to facilitate avenues for young individuals to expand their horizons through educational channels.

Elevated levels of education endow individuals with astute ideas, enhanced perceptual acumen, and analytical prowess, enabling them to navigate the complexities of life. Consequently, fostering higher educational standards becomes imperative for all strata of society. Despite the intangibility of immediate gains from the education sector, the consequential progress in various domains can be attributed to its growth. Furthermore, it is necessary to cultivate an environment where educated individuals can apply their insights and technological acumen, thereby refining their methodologies through trial and error. This generational knowledge transfer nurtures continuous progress, paving the way for innovative ideas and advancements.

A well-educated populace possessing a high intellectual quotient is instrumental in preserving a nation's cultural heritage and unique identity. Therefore, facilitating pathways for the current generation enhances their capacities to the accumulation of a highly skilled human resource pool that the nation can rely on for future nation-building endeavours.

The need of the hour is to promptly encourage the pursuit of education among the youth and establish conducive learning environments for them. The investment poured into the education sector should not be seen as an expense but rather as an investment in the nation's future. The fruits of this investment may not be immediate, but they are poised to yield substantial returns in the foreseeable future.

The significance of investing in education cannot be undermined. The symbiotic collaboration between governmental bodies and private entities, along with the creation of diverse learning opportunities, forms the bedrock of a knowledgeable society. As such, everybody must remain steadfast in their commitment to education, as its impact reverberates not just in the present but shapes the trajectory of the nation's progress.

A well-educated populace possessing a high intellectual quotient is instrumental in preserving a nation's cultural heritage and unique identity. Therefore, facilitating pathways for the current generation enhances their capacities to the accumulation of a highly skilled human resource pool that the nation can rely on for future nation-building endeavours.

The need of the hour is to promptly encourage the pursuit of education among the youth and establish conducive learning environments for them. The investment poured into the education sector should not be seen as an expense but rather as an investment in the nation's future. The fruits of this investment may not be immediate, but they are poised to yield substantial returns in the foreseeable future.

The significance of investing in education cannot be undermined. The symbiotic collaboration between governmental bodies and private entities, along with the creation of diverse learning opportunities, forms the bedrock of a knowledgeable society. As such, everybody must remain steadfast in their commitment to education, as its impact reverberates not just in the present but shapes the trajectory of the nation's progress.

In today's rapidly changing world, intelligence goes beyond just acing exams and solving complex mathematical problems. While IQ (Intelligence Quotient) has long been regarded as the measure of cognitive abilities, it is only part of the equation. Another crucial aspect of human intelligence is EQ (Emotional Quotient), which reflects our ability to understand and manage emotions. In this beginner-level context, we will explore what IQ and EQ mean, their significance, and how they complement each other to enhance our overall well-being and success.

### IQ (Intelligence Quotient)

IQ is a standardized measure used to assess cognitive abilities, reasoning, problem-solving skills, and overall intellectual potential. It is often represented as a numerical score obtained from various standardized tests, such as intelligence tests. The average IQ score is set at 100, with scores above or below indicating above-average or below-average intellectual abilities, respectively.

The IQ test primarily assesses logical-mathematical intelligence, spatial reasoning, verbal comprehension, and memory. People with high IQs tend to excel in academic pursuits, technical fields, and analytical professions. However, it's essential to note that IQ alone does not measure creativity, emotional intelligence, or practical wisdom.

### EQ (Emotional Quotient)

Emotional intelligence, or EQ, refers to the capacity to recognize, understand, manage, and express emotions effectively. Unlike IQ, EQ is not assessed through standardized tests but is rather evaluated through observation of behaviours and responses in various emotional situations.

### EQ consists of five core components

**Self-awareness:** Recognizing and understanding one's emotions and their impact on thoughts and behaviours.

**Self-regulation:** Managing and controlling emotional responses, avoiding impulsive reactions, and adapting to different situations.

**Motivation:** Having a drive to achieve goals, persisting in the face of challenges, and being optimistic.

**Empathy:** Understanding

and considering the emotions and perspectives of others.

**Social skills:** Building and maintaining healthy relationships, effective communication, and resolving conflicts.

### The Interplay Between IQ and EQ

While IQ and EQ are distinct forms of intelligence, they are not mutually exclusive. They complement each other, and their combined strength can lead to greater success in personal and professional life.

**Academic Performance:** IQ might be a predictor of academic success, but EQ can significantly influence a student's ability to manage stress, collaborate with peers, and communicate with teachers, ultimately enhancing their overall learning experience.

**Leadership:** Effective leaders not only possess strong cognitive abilities (IQ) but also demonstrate empathy, emotional awareness, and excellent interpersonal skills (EQ) to motivate and inspire their teams.

**Problem-Solving:** High IQ allows for efficient analysis and critical thinking, while EQ contributes to a deeper understanding of the emotions involved in decision-making, leading to more thoughtful and empathetic solutions.

**Social Relationships:** EQ plays a vital role in establishing and maintaining healthy relationships, while IQ can assist in understanding complex social dynamics and verbal communication.

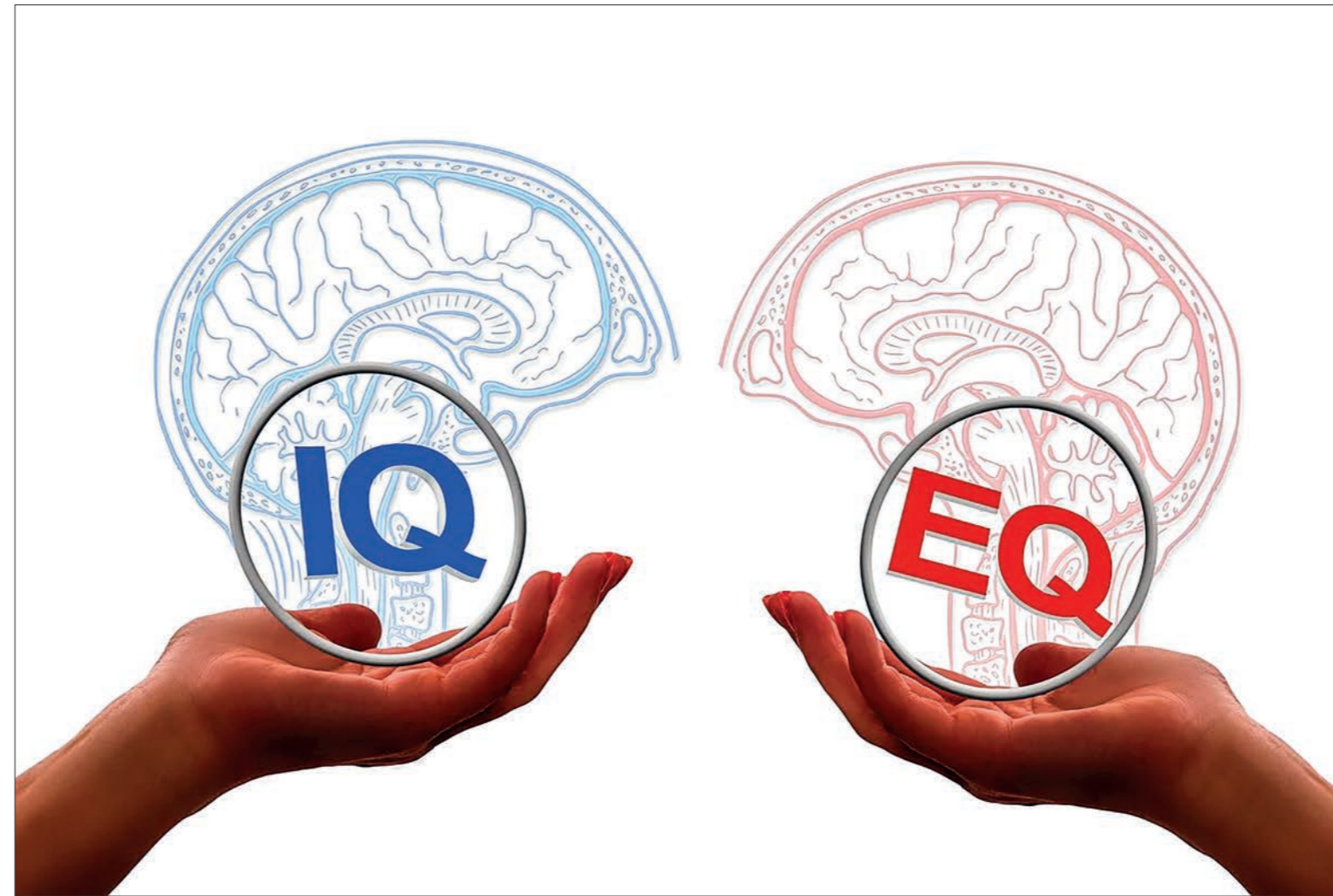
Moreover, in the realm of human intelligence, these two important dimensions play a significant role in our personal and professional lives: IQ and EQ. IQ measures cognitive abilities, such as logical reasoning and problem-solving skills, while EQ focuses on emotional awareness, empathy, and social skills. Here again, let's explore the differences between IQ and EQ and discuss their impacts when understood and applied in various aspects of life.

### Understanding IQ and its Impact

IQ, commonly measured through standardized tests, evaluates an individual's cognitive abilities and intellectual potential. A high IQ suggests strong analytical skills, quick learning capabilities, and the ability to

# The Brilliant Dance of IQ and EQ in the 21<sup>st</sup> Century

By Min Zan



IQ gauges cognitive prowess, while EQ powers emotional acumen and social finesse. Together, they guide us through life's intricate tapestry." **ILLUSTRATION: PIX FOR VISUAL PURPOSE/PIXABAY**

excel in academic settings and technical fields. Understanding IQ enables individuals to recognize their intellectual strengths and weaknesses, allowing them to make informed decisions about their education and career paths.

### Impact of Understanding IQ

**Academic Achievement:** A clear understanding of one's IQ can help students identify subjects they may excel and seek appropriate support for subjects that require more effort.

**Career Choices:** Recognizing their intellectual strengths can guide individuals in selecting careers that align with their abilities, leading to greater job satisfaction and success.

**Problem-Clarifying:** Knowing one's problem-clarifying capabilities can enhance critical thinking skills and enable individuals to tackle challenges more effectively. EQ, on the other hand, deals

with emotional intelligence and interpersonal skills. It involves recognizing and managing one's emotions and understanding the feelings and perspectives of others. Understanding EQ fosters self-awareness and empathy, which are crucial for building meaningful relationships and effective communication.

### Impact of Understanding EQ

**Self-Management:** Understanding emotions allows individuals to regulate their reactions, leading to better emotional control and reduced stress.

**Empathetic Relationships:** Emotional intelligence facilitates the development of deep and meaningful connections with others, forming stronger personal and professional relationships.

**Conflict Resolution:** Recognizing emotions in oneself and others helps individuals navigate

conflicts more empathetically and find constructive resolutions.

### Applying IQ and EQ in Daily Life

Understanding both IQ and EQ is essential, but applying them in real-life situations is equally crucial for personal growth and success.

**Decision Making:** Applying IQ involves rational thinking and logical analysis to make informed decisions while applying EQ helps consider emotional factors and potential impacts on others.

**Leadership:** Effective leaders utilize their IQ to strategize and plan, while EQ helps them connect with their teams, inspire motivation, and create a positive work environment.

**Communication:** A blend of IQ and EQ in communication ensures clear and concise expression of ideas while being sensitive to the emotional responses

of others.

Furthermore, human intelligence is a complex and multi-faceted concept that goes beyond the conventional idea of IQ alone. While IQ measures cognitive abilities, EQ evaluates emotional intelligence. Both IQ and EQ play significant roles in shaping a person's life and interactions with the world. Now, here, we will explore the effects of IQ and EQ abilities on an individual's personal and professional development.

### The Impact of IQ Abilities

**Academic Achievement:** Individuals with higher IQ scores often demonstrate superior academic performance. They can comprehend complex concepts, learn quickly, and excel in problem-solving tasks. This often leads to better grades, academic accolades, and a greater likelihood of pursuing higher education.

**Cognitive Skills:** High IQ in-

dividuals tend to possess strong analytical and critical thinking abilities. They can approach challenges methodically and find innovative solutions to problems, making them valuable assets in various professional settings.

**Career Opportunities:** IQ empowers individuals with exceptional cognitive skills, leading to academic success and better career opportunities. On the other hand, EQ nurtures emotional awareness, empathy, and strong interpersonal relationships, enhancing personal and professional interactions. When both IQ and EQ are balanced and synergized, individuals become more adaptable, empathetic leaders, better equipped to handle challenges and form meaningful connections with others. Recognizing the power of both dimensions of intelligence can encourage individuals to develop and IQ and EQ, though distinct, are both vital elements of human intelligence.

### The Impact of EQ Abilities

**Emotional Awareness:** Individuals with high EQ are attuned to their own emotions and can identify and express their feelings effectively. This self-awareness contributes to better emotional management and coping strategies during challenging times.

**Interpersonal Relationships:** Emotional intelligence strengthens interpersonal relationships by fostering empathy, understanding, and effective communication. People with high EQ can form deeper connections and build trust with others, making them excellent team players and leaders.

**Conflict Resolution:** EQ abilities enable individuals to handle conflicts and disagreements more constructively. By recognizing emotions in themselves and others, they can navigate sensitive situations with empathy and find solutions that consider everyone's feelings.

### The Synergy of IQ and EQ

While IQ and EQ abilities have individual impacts, their combined strength can lead to significant advantages in various aspects of life.

**Effective Leadership:** Leaders with a balance of IQ and EQ can devise strategic plans (IQ) and inspire and motivate their teams (EQ). They can make rational decisions while considering the emotional well-being of their employees.

**Adaptability:** High IQ enables individuals to learn and adapt quickly to changing circumstances, while EQ helps them navigate emotional upheavals and uncertainties with resilience.

**Social Success:** A combination of IQ and EQ leads to improved social skills. Individuals can engage in intellectual conversations (IQ) while demonstrating emotional intelligence and under-

standing social cues (EQ). Now, it might be somewhat enough for the readers to understand the effects of IQ and EQ abilities on a person that is profoundly and wide-ranging. As the statement mentioned above, IQ empowers individuals with exceptional cognitive skills, leading to academic success and better career opportunities. On the other hand, EQ nurtures emotional awareness, empathy, and strong interpersonal relationships, enhancing personal and professional interactions. When both IQ and EQ are balanced and synergized, individuals become more adaptable, empathetic leaders, better equipped to handle challenges and form meaningful connections with others. Recognizing the power of both dimensions of intelligence can encourage individuals to develop and IQ and EQ, though distinct, are both vital elements of human intelligence.

standing social cues (EQ).

Now, it might be somewhat enough for the readers to understand the effects of IQ and EQ abilities on a person that is profoundly and wide-ranging. As the statement mentioned above, IQ empowers individuals with exceptional cognitive skills, leading to academic success and better career opportunities. On the other hand, EQ nurtures emotional awareness, empathy, and strong interpersonal relationships, enhancing personal and professional interactions. When both IQ and EQ are balanced and synergized, individuals become more adaptable, empathetic leaders, better equipped to handle challenges and form meaningful connections with others. Recognizing the power of both dimensions of intelligence can encourage individuals to develop and IQ and EQ, though distinct, are both vital elements of human intelligence.

In addition, understanding IQ empowers individuals to leverage their cognitive strengths, make wise career choices, and excel in academic pursuits. Understanding EQ fosters emotional awareness, empathy, and social skills, leading to healthier relationships and effective communication. **By applying both IQ and EQ in daily life, individuals can make better decisions, become more effective leaders, and form meaningful connections with others, ultimately leading to personal growth and success in all spheres of life.** Balancing and harnessing the power of both IQ and EQ can truly enhance the quality of our lives and the lives of those around us.

What's more, IQ and EQ are two essential facets of human intelligence, each contributing to our ability to navigate the complexities of life. While IQ measures cognitive abilities and academic potential, EQ determines emotional awareness and interpersonal skills. As individuals, striving for a balance between the two can lead to greater success, improved well-being, and healthier relationships. **Therefore, recognizing the significance of both IQ and EQ can empower us to cultivate our strengths and work on areas that need improvement, fostering personal growth and a more fulfilling life journey.**

Reference: <https://www.verywellmind.com/iq-or-eq>



# SCI/ENVIRON WORLD



A visitor experiences a VR interactive system at the China Pavilion of Thailand National Science and Technology Fair 2023 in Bangkok, Thailand, 11 August 2023. **PHOTO: WANG TENG/XINHUA**

## Thailand's science expo highlights collaborative innovations with China

THAILAND'S annual science and technology exhibition kicked off in Bangkok on Friday, aiming to promote cooperation in science and technology between Southeast Asia and the global forefront.

Led by the Chinese Academy of Sciences Innovation Cooperation Center (Bangkok), over 30 Chinese enterprises and organizations participated in the exhibition.

The China Pavilion's presentation highlights cutting-edge

joint efforts in key sectors like infrastructure, space technology, healthcare, sustainability, and education between the two countries. At the opening ceremony, Thai Deputy Prime Minister and Foreign Minister Don Pramudwinai underscored the government's acknowledgment of the vital role played by advancements in society, economy, and science and technology, underscoring Thailand's dedication to fostering overall progress through innovation. — Xinhua

## Key Spanish lagoon dries out due to drought, overexploitation

THE largest permanent lagoon in drought-hit southern Spain's Donana natural park, home of one of Europe's largest wetlands, has completely dried out for the second summer in a row.

A huge patch of cracked white earth has replaced the waters of the Santa Olalla lagoon, which usually houses abundant aquatic life and huge colonies of migrating birds.

The lagoon — which once covered around 45 hectares (110 acres) — has been shrinking in recent years but this is the first time that it has dried out for two consecutive years, according to the Spanish National Research Council (CSIC). Scientists blame the lagoon's disappearance on a prolonged drought combined



An aerial picture taken of the dried out Santa Olalla lagoon in southern Spain. **PHOTO: SPANISH NATIONAL RESEARCH COUNCIL (CSIC)/AFP**

with the overexploitation of aquifers for farming and tourism.

"Recent years have been very dry, which is not rare for a

Mediterranean climate," Carmen Diaz Paniagua, a researcher at the Donana Biological Station, told AFP. — AFP

## US to invest \$1.2 bln on facilities to pull carbon from air

THE US government said Friday it will spend up to \$1.2 billion for two pioneering facilities to vacuum carbon out of the air, a historic gamble on a still developing technology to combat global warming that is criticized by some experts.

The two projects — in Tex-

as and Louisiana — each aim to eliminate one million tons of carbon dioxide per year, equivalent in total to the annual emissions of 445,000 gas-powered cars.

It is "the world's largest investment in engineered carbon removal in history," the Energy

Department said in a statement.

"Cutting back on our carbon emissions alone won't reverse the growing impacts of climate change," Energy Secretary Jennifer Granholm said in the statement. "We also need to remove the CO<sub>2</sub> that we've already put in the atmosphere." — AFP

## Land and sea efforts to save reefs must work together: study

A new study offers a glimmer of hope in efforts to save the world's coral reefs, which play a vital role in underwater life but have been put under threat by rising ocean temperatures.

The study published Wednesday, which is based on 20 years of data from the US island of Hawaii, says that combining local efforts to limit the impact of humans on both the land and sea give coral reefs a greater chance at bouncing back.

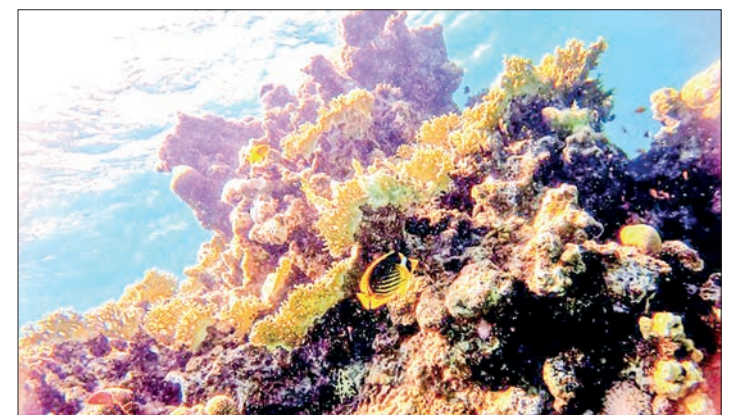
"We found that both land-based (for example wastewater pollution) and sea-based human impacts (for example fishing) must be reduced together to ensure coral reef

persistence," the study's co-lead author Gareth Williams, a marine ecologist at the UK's Bangor University, told AFP.

Using high-resolution data and thousands of hours of underwater surveys, the researchers looked at connections between human impacts and the recovery of the reef.

They found that not all coral reefs suffer equally during heatwaves.

In 18 per cent of the reefs surveyed during an unprecedented marine heatwave in Hawaii in 2015, coral cover remained unchanged — and in some cases, increased — despite the heat. — AFP



The key drivers of coral health following the heat stress were how strained they were by local human impacts and the abundance of algae-eating fish clearing the way for coral regrowth. **PHOTO: AFP/FILE**

# Renewed interest in sumo proves big pull for tourists

THEIR interest piqued during Covid lockdowns and by a new Netflix drama, a fresh rush of foreign tourists are flocking to Japan for a look inside the insular world of sumo.

Japan's national sport — hundreds of years old and steeped in tradition — has long been a source of fascination outside the country, but those in the industry say interest has spiked in recent years, with some making the most of the new attention.

At a recent lunchtime “performance”, two imposing sumo practitioners strutted their stuff in a Tokyo restaurant full of cheering tourists.

Afterwards, the spectators took selfies with the hulking athletes and donned padded sumo costumes and wigs to try their hand at the ancient art in a bout



Former sumo wrestlers taking part in a demonstration match in front of tourists from abroad at the Yokozuna Tonkatsu Dosukoi Tanaka restaurant in Tokyo. **PHOTO: AFP**

against retired professionals.

“The kids had a blast. I had a

blast getting up there and fighting with them,” said Kiernan

Riley, 42, from Arizona.

“They put on a good show.”

Definitely one of the highlights of the trip.”

Tickets for the thrice-weekly event, which includes commentary in English and a slap-up meal, go for ¥11,000 (US\$76) each and were sold out for the following six weeks.

One of the stars is former top professional wrestler Takayuki Sakuma, aka Jokoryu, who stands six foot two inches (1.87 metres) tall and weighed 170 kilos (375 pounds) at his peak.

“When you're a professional, your life depends on sumo,” the now-retired 35-year-old told AFP. “And it's not to be taken lightly.”

“But to entertain people we add humour. The most important thing is to make people appreciate sumo as culture.” — AFP

## Miss Universe cuts ties with Indonesia chapter after harassment allegations

THE Miss Universe Organization has cut ties with its Indonesia franchise, it announced days after allegations of sexual harassment, and will cancel an upcoming Malaysia edition.

In the complaint, more than a half dozen women said all 30 finalists for Miss Universe Indonesia were unexpectedly asked to strip for a supposed body check for scars and cellulite two days before the pageant's crowning ceremony in Jakarta.

Their lawyer said Tuesday that five of the women had their pictures taken.

“In light of what we have learned took place at Miss Uni-

verse Indonesia, it has become clear that this franchise has not lived up to our brand standards, ethics, or expectations,” the US-based Miss Universe Organization posted Saturday night on social media site X, formerly known as Twitter.

It said that it had “decided to terminate the relationship with its current franchise in Indonesia, PT Capella Swastika Karya, and its National Director, Poppy Capella.”

It thanked the contestants for their bravery in coming forward and added that “providing a safe place for women” was the organization's priority. — AFP



The Jakarta competition was held from 29 July to 3 August to choose Indonesia's representative to the 2023 Miss Universe contest. **PHOTO: FACEBOOK/MISS UNIVERSE INDONESIA**

## Fading neon signs shine again in Hong Kong exhibit

A fuchsia sign for a bridal shop, the Chinese “double happiness” character, a cool-blue flying dragon — luminous lights of dozens of neon signs removed from the streets of Hong Kong flickered on once again at a downtown exhibit. The show at Hong Kong's Tai Kwun — a historic police compound-turned-cultural centre — was curated by Tetra Neon Exchange, a group focused on conserving the city's neon signs that are slowly being taken down due to building safety concerns.

“Neon lights like these are becoming fewer and fewer... so I wanted to come here to take pictures to leave a memory for myself,” said 18-year-old student



People visit a neon sign exhibition at Tai Kwun in Hong Kong on 5 July 2023, presented in association with Tetra Neon Exchange (TNX) a non-government organisation (NGO) that preserves Hong Kong's neon signs. **PHOTO: AFP**

Mei Yan dressed up in a traditional Cheongsam dress — befitting of the exhibit's retro vibe.

Another visitor surnamed Chan said the exhibit serves as

a reminder of Hong Kong's past.

“We saw these signs when we were young, but as time goes by, many of them disappear,” Chan told AFP. — AFP

## Emmys postponed until January over Hollywood strikes

THE Emmy Awards have been postponed by almost four months, organizers said Friday, as crippling strikes by Hollywood's actors and writers drag on with no resolution in sight.

Television's equivalent of

the Oscars had been due to take place this September, but will now be held in mid-January next year, broadcaster Fox and the Television Academy wrote in a statement.

“We are pleased to announce that the 75<sup>th</sup> Emmy Awards will

now air on Monday, 15 January 2024,” said a Fox spokesman.

The Emmys are the most significant entertainment event so far to be delayed by Hollywood's first industry-wide walk-out by both actors and writers in more than 60 years. — AFP

# ECONOMY WORLD

## China tells Japan blanket seafood testing meant to protect consumers

CHINA has told Japan its blanket radiation testing on seafood imports from the neighboring country introduced last month is “a necessary measure” to protect its consumers, according to sources familiar with the bilateral relationship.

The testing is believed to have been adopted to pressure Tokyo over its plan to begin releasing treated radioactive water from the crippled Fukushima nuclear plant into the sea, possibly from late August.

Beijing has communicated through diplomatic channels its practice of detaining seafood imports from Japan at customs for up to a month before clearance. Meanwhile, Tokyo has expressed renewed concerns about this procedure, urging for “appropriate” customs processes, according to the sources.

In addition to seafood, other food and beverage items, including rice, from Japan have faced delays at Chinese customs fol-



Japanese seafood is offloaded at a port in Taicang, a city in China's Jiangsu Province, on 28 March 2023. PHOTO: VCG/GETTY/KYODO

lowing the introduction of blanket testing. The two Asian neighbors have had several rounds of consultations over the across-the-board testing of seafood items at Chinese customs, with Beijing claiming it “needs to prevent imports of radiation-contaminated Japanese food products”, the sources said.

In those sessions, China did

not elaborate on concrete steps taken by customs authorities regarding food imports other than marine products, they added.

China has prohibited food imports from Fukushima and nine other Japanese prefectures since a devastating earthquake and tsunami in 2011 triggered a major accident at the Fukushima Daiichi nuclear plant. — Kyodo

## Türkiye's Antalya airport undergoes makeover to boost tourism

ANTALYA, a major tourist destination on Türkiye's southern Mediterranean coast, is undergoing a major expansion of its airport to accommodate the growing number of foreign visitors.

The international airport is currently undergoing a comprehensive renovation and expansion project that will double its annual passenger capacity from 40 million to 80 million.

The first phase of the project, which began in January 2022 and is scheduled to be completed in January 2025,

includes the construction of a new runway, terminal building, and cargo handling facility.

The project is partly financed by the Asian Infrastructure Investment Bank, which extended in April a 140-million euro loan (153.6 million US dollars) to the airport. “We aim to expand the tourism season to 12 months a year, moving beyond just the summer boom. This project can help us achieve that goal,” Durdali Savkar, Antalya airport chief manager, told Xinhua. — Xinhua



Antalya, a major tourist destination on Türkiye's southern Mediterranean coast, is undergoing a major expansion of its airport to accommodate the growing number of foreign visitors. PHOTO: XINHUA

## US wholesale prices rise in July on jump in services costs



The Hunts Point Cooperative Market is a wholesale food market located in the Hunts Point neighbourhood of the Bronx in New York City. PHOTO: PIX FOR VISUAL PURPOSE/HPCM/AFP

US wholesale prices picked up in July on a surge in services costs, according to government data released Friday, although the overall inflation figure remains muted.

The bigger-than-expected rise in the July producer price index (PPI) indicates that services prices are still buoyant, even as increases in the cost of goods are tepid.

Wholesale prices rose by

0.3 per cent from June to July, after a flat reading in the month before, according to Friday's Labour Department data.

“PPI inflation surprised to the upside in July,” High Frequency Economics' chief US economist Rubeela Farooqi wrote in a note to clients.

But headline producer prices are well below two per cent, she said, adding that annual changes in measures of

underlying inflation are also moving towards target.

Economists surveyed by MarketWatch had expected a slightly lower headline figure of 0.2 per cent.

Services prices rose by 0.5 per cent from June to July, the largest monthly increase since August 2022, fueled by a jump in trade services as well as in transportation and warehousing services. — AFP

## Mali cancels Air France flight permit

MALI has revoked Air France's permit to fly between Paris and Bamako after the carrier suspended operations to and from the country over regional instability.

Air France on Monday suspended flights to Mali and Burkina Faso after the airspace in neighbouring Niger was closed by the coup leaders who seized power on 26 July.

The measure was due to end on Friday, but the company extended it to 18 August, citing the coup in Niger and the “geopolitical situation” in the Sahel region.

The Malian authorities said the suspension breached the terms of its permit to oper-

ate the route.

In a letter addressed to Air France and verified by AFP on Friday, the National Civil Aviation Agency said the company had not provided notice and caused “inconvenience to passengers”.

“This failing entails the cancellation of your flight operating permit” for the summer season extending to October and other airlines could use the route, it added.

The agency asked Air France to submit a new flight programme before it could resume the service.

An Air France spokesman confirmed the Malian authorities' request to AFP. — AFP

## Sudanese start small businesses to survive war

SUDAN'S war has left university lecturer Ali Seif without pay for months. To make ends meet, he has turned to making soap in his room at a makeshift displacement camp. Out of work as fighting rages between the forces of rival generals, many Sudanese have been forced to find creative ways to support themselves and their families.

Until 15 April, when the conflict erupted be-

tween the army headed by General Abdel Fattah al-Burhan and Mohamed Hamdan Daglo's paramilitary Rapid Support Forces, Seif had worked at a Khartoum university.

Now the engineering lecturer and his family live in Wad Madani, a city where most of the nearly three million people displaced from the capital fled for safety with the few belongings they could bring. — AFP



Out of work as fighting rages between the forces of rival generals, many Sudanese have been forced to find new ways to scrape a living. PHOTO: AFP

## Japan female idol group shine as cab drivers to gain more fans



Female idol group Taxi'shez members (from L) Haruka Umeoka, Marina Ichiki and Tomoyo Kuno pose next to a pink taxi in Oharu, Aichi Prefecture on 17 July 2023. PHOTO: KYODO

MEMBERS from a female idol group in central Japan have taken to driving taxis on the side in a bid to widen their fan base by providing an interactive experience with "chauffeurs who can sing and dance".

Model Tomoyo Kuno, 30, actress Marina Ichiki, 38, and Haruka Umeo-

ka, 24, from the group Taxi'shez, all have permits for driving passengers, with their side work also providing a stable source of income. Their pink taxis mainly operate in Nagoya, Aichi Prefecture.

The project was launched in February last year as a joint pro-

ject by local taxi operator Fuji Taxi Group and talent agency Miraikuru.

The women take turns driving a pink taxi during the day between jobs in the entertainment industry and perform songs as a unit on the weekends.

The side hustle also

provides some flexibility for the women, who often receive job offers in entertainment at a moment's notice.

"It stabilizes our income, and we're able to focus on our main occupation," said Kuno. "It's rewarding to make new fans by driving a taxi."

Customers are given a pink certificate shaped like a business card as souvenirs, which the group promotes as a gift that will bestow the holder good luck with money.

Working as a cab driver also gives the three women an opportunity to publicize their individual activities to customers, although their current goal is to hold a solo concert as a unit.

"We want to make a name for ourselves enough to receive independent job offers," Ichiki said. — Kyodo

## China insurance institutions receive claims totalling 9.8 bln yuan from 16 flood-hit areas

CHINA'S insurance institutions have received a large number of claims from people affected by floods and geological dis-

asters triggered by recent extreme rainfall in 16 regions, the National Financial Regulatory Administration said on Saturday.

Insurance institutions in the 16 regions have so far received 260,600 claims, with the estimated losses set out

in the claims totalling 9.78 billion yuan (about 1.37 billion US dollars), according to the administration. — Xinhua

## A look into Chinese lighting solution brand in Guangdong



Lighting equipment of airport runway is displayed at an exhibition hall of Foshan Electrical and Lighting Co, Ltd in Foshan, south China's Guangdong Province, 8 August 2023. PHOTO: (XINHUA/LIU DAWEI)

FOSHAN Electrical and Lighting Co, Ltd (FSL) is one of the competitive lighting brands in China, providing full-range professional lighting solutions. The company has been actively engaging in

the innovation of science and technology. Its lighting products have been applied to the deep-sea manned submersible, cultivation and aquaculture, and new energy vehicle manufacturing. — Xinhua

### CLAIMS DAY NOTICE

M.V CONTRIVIA VOY.NO. (048N/S)

Consignees of cargo carried on **M.V CONTRIVIA VOY.NO. (048N/S)** are hereby notified that the vessel will be arriving on **14-8-2023** and cargo will be discharged into the premises of **AWPT** where it will lie at the consignee's risk and expenses and subject to the byelaws and conditions of the Port of Yangon.

Damaged cargo will be surveyed daily from 8 am to 11:20 am and 12 noon to 4 pm to Claim's Day now declared as the third day after final discharge of cargo from the Vessel.

No claims against this vessel will be admitted after the Claims Day.

Phone No: **2301185**

Shipping Agency Department  
Myanma Port Authority

Agent For:

**(ONE) OCEAN NETWORK EXPRESS LINE**

### CLAIMS DAY NOTICE

M.V IAL 001 VOY.NO. (N158)

Consignees of cargo carried on **M.V IAL 001 VOY. NO. (N158)** are hereby notified that the vessel will be arriving on **14-8-2023** and cargo will be discharged into the premises of **AWPT** where it will lie at the consignee's risk and expenses and subject to the byelaws and conditions of the Port of Yangon.

Damaged cargo will be surveyed daily from 8 am to 11:20 am and 12 noon to 4 pm to Claim's Day now declared as the third day after final discharge of cargo from the Vessel.

No claims against this vessel will be admitted after the Claims Day.

Phone No: **2301185**

Shipping Agency Department  
Myanma Port Authority

Agent For:

**M/S INTER ASIA LINES**

# ROLLING UPDATES WORLD

## Pakistan appoints caretaker PM ahead of general election

ANWAAR-UL-HAQ Kakar, a senator from Pakistan's southwestern province of Balochistan, was appointed as the country's caretaker prime minister on Saturday, the Prime Minister's Office said.

The decision comes as the country readies itself for a pivotal general election set for November, though it could be delayed by months due to logistical challenges, such as the redrawing of electoral constituencies.

Earlier this week, the National Assembly, the lower house in Pakistan's parliament, was dissolved days before the completion of its constitutionally mandated tenure of five years.

Kakar's appointment followed negotiations between Prime Minister Shehbaz Sharif and Raja Riaz, the oppo-



This undated photo shows Pakistan's caretaker Prime Minister Anwarul Haq Kakar. **PHOTO: ANWARUL HAQ KAKAR'S TWITTER ACCOUNT**

sition leader. President Arif Alvi subsequently endorsed the decision.

This time, the role of caretaker prime minister has taken on heightened importance, as

the interim government is set to have an expanded mandate in economic policy decisions, especially in light of anticipated election delays. —Kyodo

## Sumatran elephants seen in Indonesia to mark World Elephant Day

WORLD Elephant Day is an international annual event that falls on 12 August, dedicated to the preservation and protection of the world's elephants.

Two Sumatran elephants are seen in Way Kambas National Park, Indonesia's Lampung Province, as a commemoration to mark this special day.

In a reflection of a similar news story, with the aim of es-

tablishing consistent inter-state coordination in the endeavors to mitigate Human Elephant Conflict (HEC) and promote coexistence, the forest departments of Assam and Meghalaya celebrated World Elephant Day together for the first time at Thakurbilla in North Garo Hills, Meghalaya.

The celebration with the theme Safeguarding Elephant Habitats for a Sustainable To-

morrow was held on Friday in collaboration of the Assam Forest Department, Meghalaya Forest Department, Aaranyak, British Asian Trust with support of the Darwin Initiative.

The programme was graced by a number of dignitaries from both the states and over 300 people from both states including about 180 village women. —Xinhua/ANI



Two Sumatran elephants are seen at Way Kambas National Park in Lampung, Indonesia, 12 August 2023. World Elephant Day falls on 12 August. It is an annual event to raise people's awareness on elephant conservation. **PHOTO: YORRI FARLI/XINHUA**

### NEWS IN BRIEF

#### Gang boss who threatened slain Ecuador candidate transferred to max security

ECUADOR transferred a powerful gang leader, accused of threatening a presidential candidate before he was slain, to a maximum security prison via a massive military and police operation on Saturday, officials said.

At dawn some 4,000 heavily armed agents entered Prison 8 in Guayaquil in southwestern Ecuador, where the head of the powerful Los Choneros criminal group, Jose Adolfo Macias, alias "Fito," was being held.

Images shared by security forces showed a bearded man in his underwear, with his hands on his head in some shots and lying on the floor with arms tied in others.

Ecuadoran President Guillermo Lasso reported on social media site X, formerly known as Twitter, that "Fito" had been transferred to La Roca, a 150-person maximum security prison that is part of the same large penitentiary complex he was already in.

The gang leader had controlled at least one cellblock in the prison from which he was removed.

Ecuador has been under a state of emergency after the shock assassination Wednesday of journalist and anti-corruption crusader Fernando Villavicencio.

Lasso has blamed the murder on organized crime, and Villavicencio had complained of receiving death threats from Macias.

A week before the 59-year-old was killed, he had said that "Fito" was threatening him.

Villavicencio told a local program that an "emissary" of the gang leader had contacted him and warned "that if I continue... mentioning Los Choneros, they are going to break me." —AFP

## Bomb alert prompts Eiffel Tower evacuation



Visitors were evacuated from both the three floors and the square under the monument shortly after 1:30 pm (1130 GMT). **PHOTO: AFP/FILE**

THE Eiffel Tower in Paris, France's most emblematic symbol, was evacuated for several hours on Saturday after a bomb alert.

SETE, the body running the site which draws millions of visitors every year, said bomb disposal experts and police scoured the area, including a restaurant located on one of the floors.

"It's a usual procedure in

this kind of situation which however is rare," a spokeswoman said.

Visitors were evacuated from the tower's three floors and the square under the monument, while a security perimeter was set up and people directed away.

The alert was lifted a few hours later, a police source and SETE said. —AFP

# SPORTS

## England relishing 'huge' World Cup semi-final clash with Australia

ENGLAND say they are relishing playing in front of what promises to be a partisan 80,000 home crowd in their Women's World Cup semi-final against co-hosts Australia on Wednesday.

The European champions had a taste of what awaits when they fought back from a goal down to beat Colombia 2-1 on Saturday during what felt like a home game for the well-supported South Americans.

The Lionesses will be back at the imposing Stadium Australia in Sydney on Wednesday with both teams attempting to win the World Cup for the first time.

Alessia Russo scored the winner in the 63<sup>rd</sup> minute against a physical Colombia and the Arsenal forward said she had enjoyed playing in front of a hostile crowd. "That's what the World Cup is all about — seeing top teams on the biggest stage with their fans behind them," she said.

"We've had a taste of that tonight because their fans were incredible and (Australia) is another test, but one that is exciting, not only to face the hosts but to be in a semi-final. — AFP



England celebrate Alessia Russo's winner. PHOTO: AFP



Myanmar player (red) fights for the ball against his opponent during the third-place match of the Continental Futsal Championship 2023. PHOTO:MFF

## Myanmar settle for 4<sup>th</sup> in Continental Futsal Championship 2023

THE third-place match and final of the Continental Futsal Championship 2023, a futsal tournament invited by Thailand, was held in Thailand yesterday and the Myanmar team lost in the third place match.

Team Myanmar suffered 1-5 defeat to Afghanistan in the match, missing a chance to hold the bronze medal.

The Myanmar team took the lead but could not maintain the winning result. Nyein Min Soe scored the leading goal for team Myanmar, but had to concede two goals in the first half.

Due to the rough play of team Myanmar, the rival was allowed to take a penalty kick. In the second half, the Myanmar team tried to equalize, but the Afghanistan team scored three more goals to seal their big win.

The Myanmar National Futsal Team participated in this tournament as preparation for the 2024 Asian Cup Futsal Qualifiers to be played in coming October. Myanmar squad was able to advance to the group stage, but lost in the semi-finals and the third-place match and had to settle for the fourth place. — Ko Nyi Lay/KZL

## 8<sup>th</sup> Myanmar Lethwei World Championship to be launched in Yangon

THE 8<sup>th</sup> Myanmar Lethwei World Championship comprising six bouts will be held in Theinbyu Gymnasium in Yangon on 20 August.

In the five-round bouts, Tun Tun Min will battle with Thway Thit Win Hlaing under the 80-kg category while Tun Min Latt (Myanmar) will face Kohei Tokeshi (Japan) under the 75-kg category.

Next, Avatan (Thailand) will challenge Kyaw Swa Win (Myanmar) in the 71-kg event and Sein Lon Chaw will take on Moe Htet Aung in the 63-kg event.

In the four-round bouts, Hanthawady will fight against Sito under 65-kg category while Thaing Kyaw will come up against Wudawdo in the 54-kg event.

The championship will begin at 2 pm and will be broadcast live on Skynet Sports 4 / HD channel. Ticket prices are set at K10,000, K20,000 and K50,000, as stated by the organizers. — Bala Soe/KZL



A file photo shows Tun Tun Min (left) puts knee attack on Thway Thit Win Hlaing during the main bout of the Great Lethwei Challenge held in Yangon on 29 January 2023. PHOTO: BALASOE/FILE





## DC scholars: US press pushing American public to confrontation with China

RUSSIA and China joint naval drills near the Alaska coast have been used by the US mainstream press to fan an anti-China sentiment among the US public even though the Pentagon earlier explained that the patrols posed no challenge, as per DC scholars.

Earlier this month Moscow and Beijing wrapped up joint patrols in the western and northern Pacific, off the coast of Alaska. The exercises, comprising 11 warships, took place in neutral waters without violating generally accepted norms.

Nonetheless, US Sens Dan Sullivan and Lisa Murkowski blew a gasket last Saturday, describing the drills as nothing short of an “incursion”, something that was denied by the US Northern Command: “The patrol remained in international waters and was not considered a threat,” the command’s spokesperson stated on 6 August.

Meanwhile, the US mainstream press poured some more gasoline on the fire. On the very same day when the Pentagon said that the Russo-Chinese patrols posed zero challenge to the US, a mainstream American broadcaster told this story in its own way, hyping up the non-existent threat to gargantuan proportions. — SPUTNIK



The Type 052D destroyer Hefei of the Chinese Navy arrives in Baltiysk for the 2017 Naval Cooperation Russia-China drills. PHOTO: SPUTNIK/FILE

## Western, central Japan brace as Typhoon Lan to make landfall Tues



West Japan Railway Co or JR West, also said Sunday that services may be cancelled on the section between Shin-Osaka and Okayama Station in Okayama Prefecture, western Japan, on the Sanyo Shinkansen Line on Tuesday. PHOTO: AFP

A strong typhoon is expected to make landfall Tuesday in western and central Japan, with the weather agency warning

of heavy rain and related mudslides and flooding during the country’s annual Bon summer holidays.

Typhoon Lan is currently traveling south of the Izu island chain and approaching eastern and western Japan, with downpours forecast in these areas from Monday to Tuesday, the Japan Meteorological Agency said Sunday.

In anticipation of the typhoon, West Japan Railway Co. said there might be delays or suspensions in train services from Monday.

As of 9 am, Typhoon Lan was located at 380 kilometres south of Hachijo Island and slowly moving northwest. It has an atmospheric pressure of 965 hectopascals and there are winds of up to 198 kilometres per hour.

On Wednesday, the typhoon is likely to move northward through the Sea of Japan.

Rainfall of up to 300 to 500 millimetres is expected over the 24 hours through 6 am Monday in the Tokai region in central Japan, and up to 300 millimetres in Kanto-Koshin and Kinki regions. — Kyodo

## Six dead after migrant boat capsizes in Channel

SIX Afghan males died when a migrant boat heading to Britain sank in the Channel early Saturday, French officials said, as a search continued to find those still missing.

Six Afghans died when a migrant boat heading to Britain sank in the Channel on Saturday, French officials said, as a search continued to find those still missing.

“This shipwreck is a terrible human tragedy,” French State Secretary for the Sea Herve Berville told reporters at the port of Calais, the hub for rescue operations.

He denounced “criminal traffickers” who send migrants “to their death” and pledged to fight their smuggling networks. — AFP